



GREENHORNE & O'MARA

CONSULTING ENGINEERS

Inspired Solutions, Improving Lives



Your Right-of-Way Services Experts

Relocation • Negotiation
Property Management • Appraisal

Greenhorne & O'Mara (G&O) has the knowledge and experience to provide realistic solutions for your right-of-way (ROW) needs. We are experts at commercial, industrial, and residential relocation. Our staff has 150 years of combined experience and has performed work in 15 states.

The development process for public improvement projects typically involves acquisition of right-of-way and relocation of families and businesses. Timely acquisition of the ROW and timely relocation of the impacted families and businesses is critical to the construction scheduling of new facilities and the overall success of the project. As a full-service engineering firm, G&O has been providing ROW and relocation assistance services in connection with public transportation, utility, and redevelopment projects for many years.

G&O's ROW Services include the following:

Project Scoping

- Preliminary estimates for right-of-way costs

Public Hearing or Pre-acquisition Phase

- Detailed right-of-way cost estimates
- Pre-Acquisition survey & report including housing of last resort, if indicated

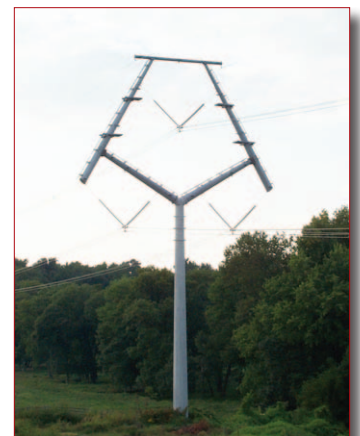
Preliminary Design Plan Phase

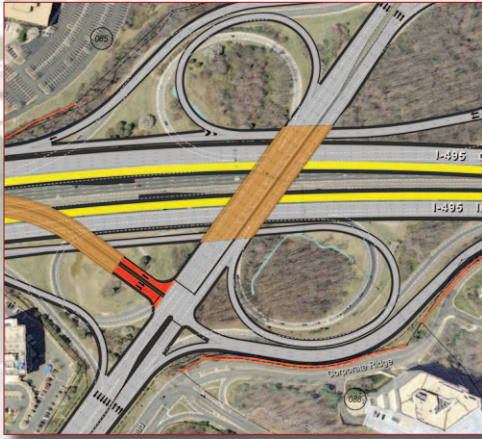
- Right-of-way cost estimates
- Inventory of property owners
- Verification of current property information

Corridor Studies

- Conceptual relocation study and report
- Preliminary estimates for right-of-way
- Costs for proposed alignments
- Inventory of affected properties and utility companies

Dominion Resources Transmission Line ROW Purchase | Virginia. G&O purchased ROW for a 43 mile transmission line in Rappahannock, Fauquier, and Culpeper counties, Virginia. We purchased easements and secured rights of entries for more than 200 landowners for the 500 KV power line. Our work enabled Dominion to upgrade its capacity to provide electricity to communities.

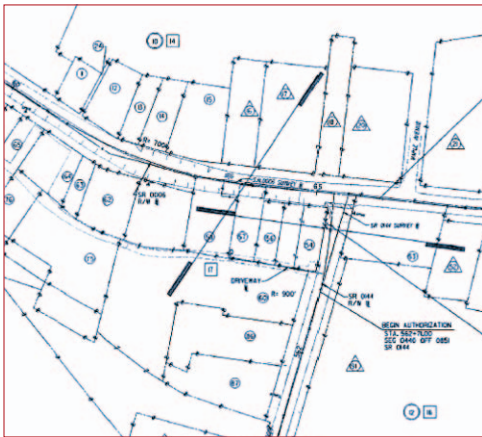
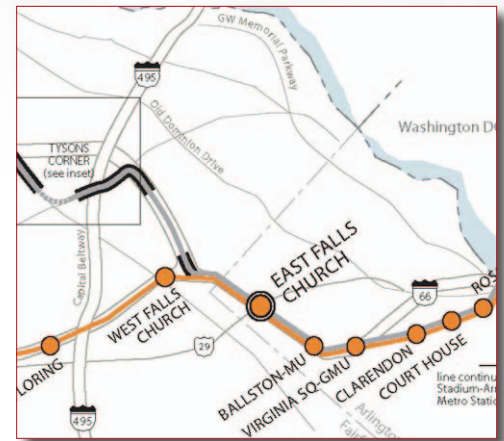




I-495 (Capital Beltway) HOT Lanes | Arlington and Fairfax

Counties, Virginia. G&O provided ROW acquisition services that included providing titles, plats, appraisal reports, appraisal review, loss of parking studies, legal document preparation, negotiations, and closing services. The project also involved eight residential relocations. These services were provided in conformance with the Uniform Relocation Assistance and Real Property Acquisition Act with funding provided by the Federal Transit Administration, Washington Metropolitan Airports Authority, and Fairfax County. G&O also initially furnished preliminary ROW estimates to establish land costs and title research for the Environmental Site Assessments.

Dulles Corridor Metrorail | Northern Virginia. G&O provided preliminary ROW cost estimates and property damage studies in connection with the extension of Metro to Dulles Airport. A major part of the corridor extends through the heavily populated Tyson Corner area of Northern Virginia. G&O services included the coordination of all appraisals, review appraisals, negotiations, acquisition, and relocation services of all required rights of way and easements along with the coordination of surveys, plat preparation, utility relocation guidance, and various engineering services for the construction of 23 miles of new track and facilities.



S.R. 0006 Galeton, Pennsylvania Department of Transportation (PennDOT), District 2-0 | Potter County, Pennsylvania.

Project included 34 claims with one relocation. Completed deed research, home inspections and inventories, researched and documented comparable housing, prepared and presented offer proposals, negotiated purchase and closing, and prepared settlement documents for approval and payment by PennDOT. The widening of the road to incorporate turning lanes will increase the safety of the corridor.



GREENHORNE & O'MARA
CONSULTING ENGINEERS

Inspired Solutions, Improving Lives

G-and-O.com • Toll-Free: 866.322.8905
National HQ: 6110 Frost Place • Laurel, MD 20707

Offices in: Florida — Kansas — Maryland — North Carolina
Pennsylvania — Virginia — West Virginia