



We're changing the way people interact with the world

Where our Team can help

Touch free systems

- Information exchange
 - Digital signage & car park management
- User experience
 - Smart access & smart building app
 - Touch free lifts
 - Wayfinding
 - Smart lighting control

Advisory services

- Building systems investigations & analysis
- Infrastructure migration planning
- Resilience and Business Continuity

Smart building systems

- Sustainable
 - Secure bicycle storage
 - Electric vehicle charging
- Workplace intelligence
 - Managing people occupancy
- Information exchange
 - Building dashboard
 - HVAC feedback system

Technology is the invisible thread that connects each of us to the world around us. It brings efficiency to our infrastructure and buildings, to our processes and increasingly shapes the way we experience the world.

Building technology now offers many ways to improve the operational efficiency, environmental sustainability, and occupant experience of the built environment. Smart building technology supports a range of measures that can help make our buildings safer and healthier places to work.

Smart buildings enable greater responsiveness to changes in the environment, and provide building managers with flexibility promptly to implement appropriate measures to deal with unforeseen crises.

What does the future hold? We believe, it has unlimited possibility - with smarter buildings to connect us, raise awareness and transform business operations. Let us show you how.



Touch free lifts

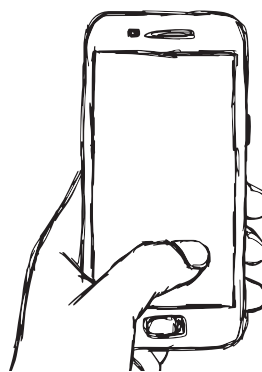
Lifts present a common point of transfer for building occupants, requiring intermingling in the foyer, use of common floor selection screens and close quarters within the lift. Reducing the need to touch floor direction controls, reduces the possibility of pathogen transfers. A great way of doing this is by using smart phone apps, with QR code reader or RFID functionality if supported by the lift control system. Voice and access card options may be available to enable touch-free lift access. Limiting lift occupancy to meet spatial separation requirements should also be considered.

Managing Buildings Occupancy



Maintaining safe spatial requirements during a serious disease outbreak can dramatically reduce transmission rates. However, it is sometimes essential for staff to be in the office. Strategies for managing building occupancy during these events, from the commencement of an outbreak to a company's phased return to 'business as usual', is vital to meet OH&S obligations and social expectations. By capitalising on existing access control technology, building managers and companies can have up-to-date information around building and floor occupancy.

Wayfinding



Dynamic wayfinding solutions permit building managers to adapt the environment to suit circumstances. Using adaptive Power over Ethernet (PoE) lighting solutions integrated to the building management system, visitor routing and segregation can be managed creatively and in real time. When integrated with dynamic digital signage, this provides clear guidance and provides a degree of reassurance for tenants and visitors during a potentially stressful time.

Connect with us

📷 📺 📺 📺 | [stantec.com](https://www.stantec.com)